



BEST TO



PANELS WOOD-BASED

- MDF/HDF
- PB
- OSB



ENERGY

- Biomass
wood-based
- Wood pellets

TECHNICAL CHARACTERISTICS

- BULLMECH "SC" screw conveyor are designed according to the specific needs of the customer. Each machine is sized according to the material to be conveyed and designed according to the planned plant layout.
- The special construction of the head, with provide emergency supports with specific dust and loop seals, allow the machines to be installed even in dusty and potentially explosive areas as required by the ATEX regulations.
- The quality of the components used and the careful design allow BULLMECH screw to work in continuous cycle systems ensuring maximum reliability and minimum operating costs.
- The BULLMECH screw can be made of carbon steel, HARDOX wear-resistant steel or AISI 304 and / or AISI 316 stainless steel depending on the material to be transported.

BENEFITS

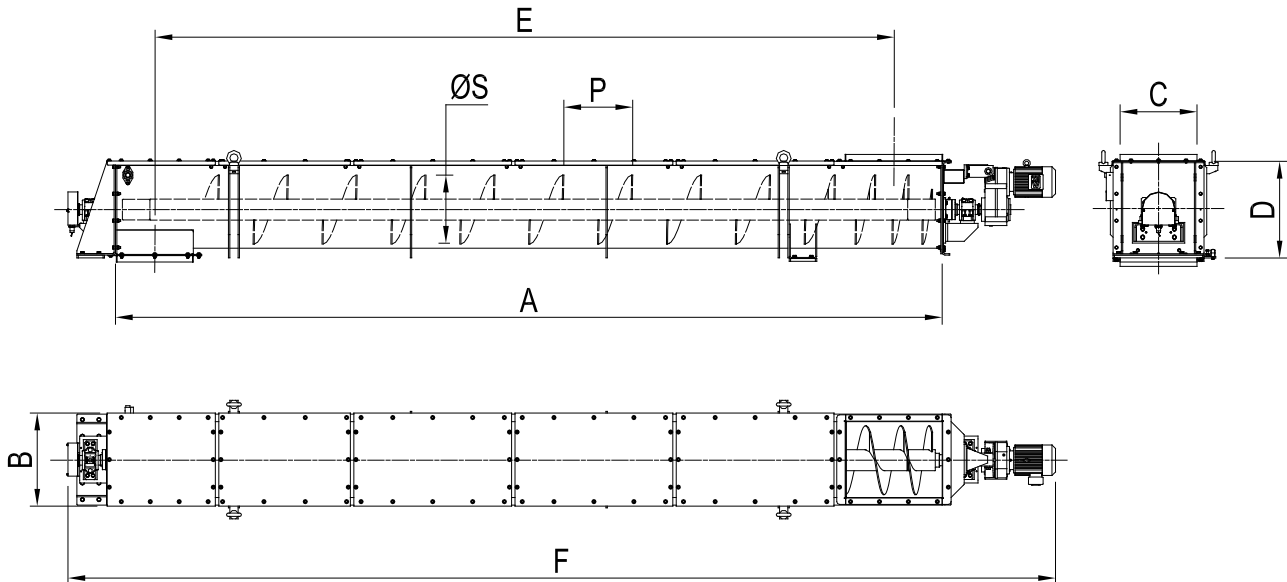
- Excellent material transport without jamming.
- Very low maintenance costs.
- Design dedicated to customer specifications.

Screw Conveyor



Model "SCT"

DATA SHEET



MODEL "ALL"	OVERALL DIMENSIONS [mm]							
	ØS	A	B	C	D	E	F	P
SCT/150/....	150							
SCT/200/....	200							
SCT/250/....	250							
SCT/300/....	300							
SCT/350/....	350							
SCT/400/....	400							
SCT/450/....	450							
SCT/500/....	500							
SCT/550/....	550							
SCT/600/....	600							
SCT/650/....	650							
SCT/700/....	700							
SCT/750/....	750							
SCT/800/....	800							
SCT/900/....	900							
SCT/1000/....	1.000							
SCT/1200/....	1.200							

DIMENSIONS ACCORDING TO THE SYSTEM LAYOUT

Screw Conveyor



Model "SCT"

CODE DEFINITION

TYPE			/	Spiral Diameter				/	SINGLE Spiral shaft	-	Case internal length				-	Equipment compatible with 2014/34/EU ATEX [a]				
S	C	T	/		3	0	0	/	S	-		5	0	0	0	-	A	T	2	2

[a]: AT22 = Area classified ATEX zone 22.
= Unclassified area (Omit).

TYPE "S"	Spiral Diameter	Case internal length		Capacity [b]		Installed power [b]	
	[mm]	[mm]		[m ³ /h]		[kW]	
		Min	Max	Min	Max	Min	Max
SCT/150/S/.....	150	1.000	3.500	0,5	3,5	0,55	2,2
SCT/200/S/....	200	1.000	4.500	2	8	0,55	2,2
SCT/250/S/....	250	1.000	5.000	4	15	0,55	3,0
SCT/300/S/....	300	1.000	6.000	7	25	0,55	4,0
SCT/350/S/....	350	1.000	6.000	10	40	0,55	5,5
SCT/400/S/....	400	1.000	8.000	15	70	0,55	11,0
SCT/450/S/....	450	1.000	8.000	25	100	0,75	11,0
SCT/500/S/....	500	1.000	8.000	35	130	1,1	15,0
SCT/550/S/....	550	2.000	9.000	45	130	1,5	15,0
SCT/600/S/....	600	2.000	10.000	60	220	1,5	22,0
SCT/650/S/....	650	3.000	10.000	80	250	3,0	30,0
SCT/700/S/....	700	3.000	12.000	100	290	4,0	37,0
SCT/750/S/....	750	3.000	12.000	120	320	5,5	37,0
SCT/800/S/....	800	3.000	12.000	150	320	5,5	45,0
SCT/900/S/....	900	3.000	12.000	150	460	7,5	55,0
SCT/1000/S/....	1.000	5.000	12.000	250	560	18,5	75,0
SCT/1200/S/....	1.200	5.000	12.000	350	760	22,0	110,0

[b]: Calculation carried out with material density 180 kg/m³ and humidity 100%.

The capacity and power data are indicative but allow you to quickly identify the machine size closest to the transport needs. The exact calculations of flow rate and power will be made in the offer phase according to the required application.

Example for order: **SCT/300/S-5000-AT22**

Screw Conveyor



Model "SCT"

CODE DEFINITION

TYPE			/	Spiral Diameter				/	DOUBLE Spiral shaft	-	Case internal length				-	Equipment compatible with 2014/34/EU ATEX [a]				
S	C	T	/		3	0	0	/	D	-		5	0	0	0	-	A	T	2	2

[a]: AT22 = Area classified ATEX zone 22.
= Unclassified area (Omit).

TYPE "D"	Spiral Diameter	Case internal length		Capacity [b]		Installed power [b]	
	[mm]	[mm]		[m ³ /h]		[kW]	
		Min	Max	Min	Max	Min	Max
SCT/150/D/.....	150	1.000	3.500	1	7	2x0,55	2x2,2
SCT/200/D/....	200	1.000	4.500	4	8	2x0,55	2x2,2
SCT/250/D/....	250	1.000	5.000	8	30	2x0,55	2x3,0
SCT/300/D/....	300	1.000	6.000	14	50	2x0,55	2x4,0
SCT/350/D/....	350	1.000	6.000	20	80	2x0,55	2x5,5
SCT/400/D/....	400	1.000	8.000	30	140	2x0,55	2x11,0
SCT/450/D/....	450	1.000	8.000	50	200	2x0,75	2x11,0
SCT/500/D/....	500	1.000	8.000	70	260	2x1,1	2x15,0
SCT/550/D/....	550	2.000	9.000	90	260	2x1,5	2x15,0
SCT/600/D/....	600	2.000	10.000	120	440	2x1,5	2x22,0
SCT/650/D/....	650	3.000	10.000	160	500	2x3,0	2x30,0
SCT/700/D/....	700	3.000	12.000	200	580	2x4,0	2x37,0
SCT/750/D/....	750	3.000	12.000	240	640	2x5,5	2x37,0
SCT/800/D/....	800	3.000	12.000	300	640	2x5,5	2x45,0
SCT/900/D/....	900	3.000	12.000	300	920	2x7,5	2x55,0
SCT/1000/D/...	1.000	5.000	12.000	500	1.120	2x18,5	2x75,0
SCT/1200/D/...	1.200	5.000	12.000	700	1.520	2x22,0	2x110,0

[b]: Calculation carried out with material density 180 kg/m³ and humidity 100%.

The capacity and power data are indicative but allow you to quickly identify the machine size closest to the transport needs. The exact calculations of flow rate and power will be made in the offer phase according to the required application.

Example for order: **SCT/300/D-5000-AT22**

Model "SCT"

CODE DEFINITION

TYPE			/	Spiral Diameter				/	TRIPLE Spiral shaft	-	Case internal length				-	Equipment compatible with 2014/34/EU ATEX [a]				
S	C	T	/		3	0	0	/	T	-		5	0	0	0	-	A	T	2	2

[a]: AT22 = Area classified ATEX zone 22.
= Unclassified area (Omit).

TYPE "T"	Spiral Diameter	Case internal length		Capacity [b]		Installed power [b]	
	[mm]	[mm]		[m ³ /h]		[kW]	
		Min	Max	Min	Max	Min	Max
SCT/150/T/....	150	1.000	3500	1,5	10,5	3x0,55	3x2,2
SCT/200/T/....	200	1.000	4500	6	24	3x0,55	3x2,2
SCT/250/T/....	250	1.000	5.000	12	45	3x0,55	3x3,0
SCT/300/T/....	300	1.000	6.000	21	75	3x0,55	3x4,0
SCT/350/T/....	350	1.000	6.000	30	120	3x0,55	3x5,5
SCT/400/T/....	400	1.000	8.000	45	210	3x0,55	3x11,0
SCT/450/T/....	450	1.000	8.000	75	300	3x0,75	3x11,0
SCT/500/T/....	500	1.000	8.000	105	390	3x1,1	3x15,0
SCT/550/T/....	550	2.000	9.000	135	390	3x1,5	3x15,0
SCT/600/T/....	600	2.000	10.000	180	660	3x1,5	3x22,0
SCT/650/T/....	650	3.000	10.000	240	750	3x3,0	3x30,0
SCT/700/T/....	700	3.000	12.000	300	870	3x4,0	3x37,0
SCT/750/T/....	750	3.000	12.000	360	960	3x5,5	3x37,0
SCT/800/T/....	800	3.000	12.000	450	960	3x5,5	3x45,0
SCT/900/T/....	900	3.000	12.000	450	1.380	3x7,5	3x55,0
SCT/1000/T/....	1.000	5.000	12.000	750	1.680	3x18,5	3x75,0
SCT/1200/T/....	1.200	5.000	12.000	1.050	2.280	3x22,0	3x110,0

[b]: Calculation carried out with material density 180 kg/m³ and humidity 100%.

The capacity and power data are indicative but allow you to quickly identify the machine size closest to the transport needs. The exact calculations of flow rate and power will be made in the offer phase according to the required application.

Example for order: **SCT/300/T-5000-AT22**

Screw Conveyor



Model "SCT"

CODE DEFINITION

TYPE			/	Spiral Diameter			/	QUADRUPLE Spiral shaft	-	Case internal length				-	Equipment compatible with 2014/34/EU ATEX [a]					
S	C	T	/		3	0	0	/	Q	-		5	0	0	0	-	A	T	2	2

[a]: AT22 = Area classified ATEX zone 22.
= Unclassified area (Omit).

TYPE "Q"	Spiral Diameter	Case internal length		Capacity [b]		Installed power [b]	
	[mm]	[mm]		[m ³ /h]		[kW]	
		Min	Max	Min	Max	Min	Max
SCT/150/Q/.....	150	1.000	3.500	2	14	4x0,55	4x2,2
SCT/200/Q/....	200	1.000	4.500	8	32	4x0,55	4x2,2
SCT/250/Q/....	250	1.000	5.000	16	60	4x0,55	4x3,0
SCT/300/Q/....	300	1.000	6.000	28	100	4x0,55	4x4,0
SCT/350/Q/....	350	1.000	6.000	40	160	4x0,55	4x5,5
SCT/400/Q/....	400	1.000	8.000	60	280	4x0,55	4x11,0
SCT/450/Q/....	450	1.000	8.000	100	400	4x0,75	4x11,0
SCT/500/Q/....	500	1.000	8.000	140	520	4x1,1	4x15,0
SCTT/550/Q/....	550	2.000	9.000	180	520	4x1,5	4x15,0
SCTT/600/Q/....	600	2.000	10.000	240	880	4x1,5	4x22,0
SCTT/650/Q/....	650	3.000	10.000	320	1.000	4x3,0	4x30,0
SCTT/700/Q/....	700	3.000	12.000	400	1.160	4x4,0	4x37,0
SCTT/750/Q/....	750	3.000	12.000	480	1.280	4x5,5	4x37,0
SCTT/800/Q/....	800	3.000	12.000	600	1.280	4x5,5	4x45,0

[b]: Calculation carried out with material density 180 kg/m³ and humidity 100%.

The capacity and power data are indicative but allow you to quickly identify the machine size closest to the transport needs. The exact calculations of flow rate and power will be made in the offer phase according to the required application.

Example for order: **SCT/300/Q-5000-AT22**