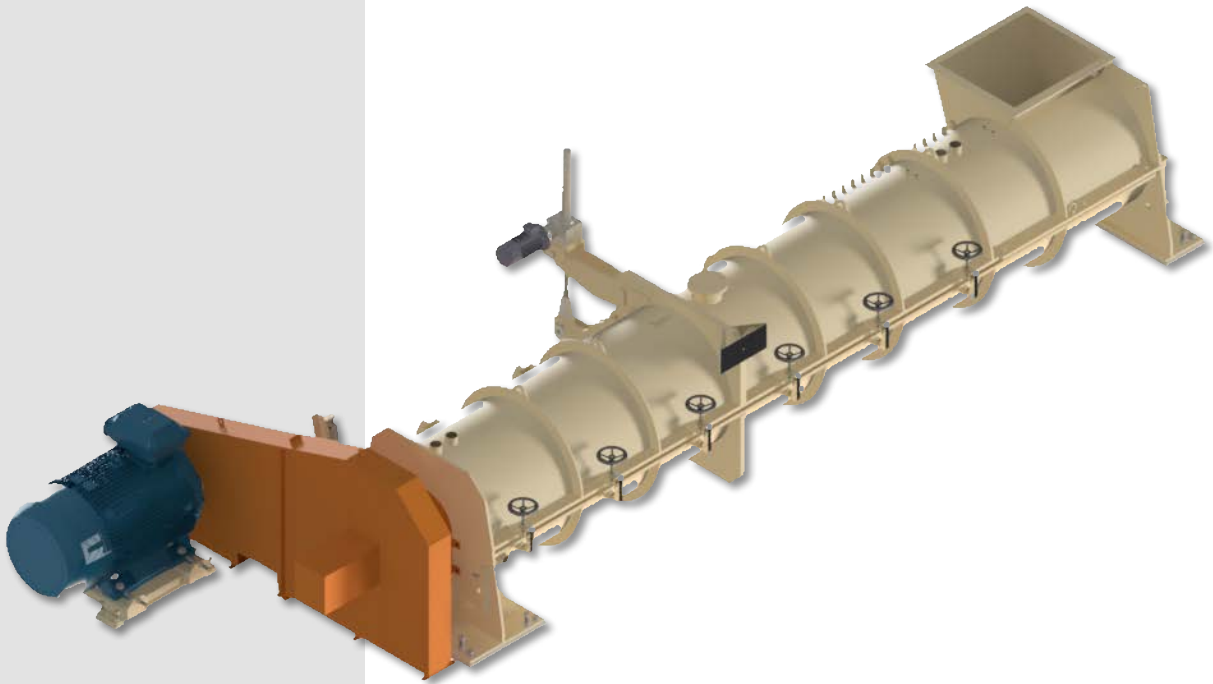


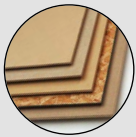
Low Speed Glue Blenders

08.05.01

Model "BBL"



BEST TO



PANELS WOOD-BASED

- MDF/HDF
- PB
- OSB

TECHNICAL CHARACTERISTICS

- Gentle and effective mixing of wood particles and glue.
- Whenever the process requires mixing wood chips, the question arises of how to preserve the geometric shape of the chip. Preserving the shape is very important since an excessive reduction in the size of the particles would generate dust which would cause stains in the finished product and an increase in the consumption of glue.
- BULLMECH "BBL" Glue Blenders guarantee longer retention and mixing times; in this way the centrifugal effect decreases with consequent reduction of impacts and production of dust.
- The specific construction of the machine allows separate cooling of the shell (with three independent circuits for the base, the cover, and the feeding hopper), the rotor and the mixing tools.
- The internal shells of the Glue Blenders can be supplied with special internal wear-resistant coatings to satisfy even the most severe operating conditions.

Furthermore, material feeding can be done with two types of rotors:

- SLF type resin milling machines are equipped with crescent-shaped tools (paddles) to provide a better introduction of the SL chip into the mixing chamber.
- The CLF type resin milling machines are equipped with a spiral drum that introduces the CL chip into the mixing chamber, limiting the impact between the particles to a minimum.
- The adoption of advanced design solutions allows BULLMECH Glue Blenders to be installed even in dusty and potentially explosive areas as required by the ATEX regulations.

BENEFITS

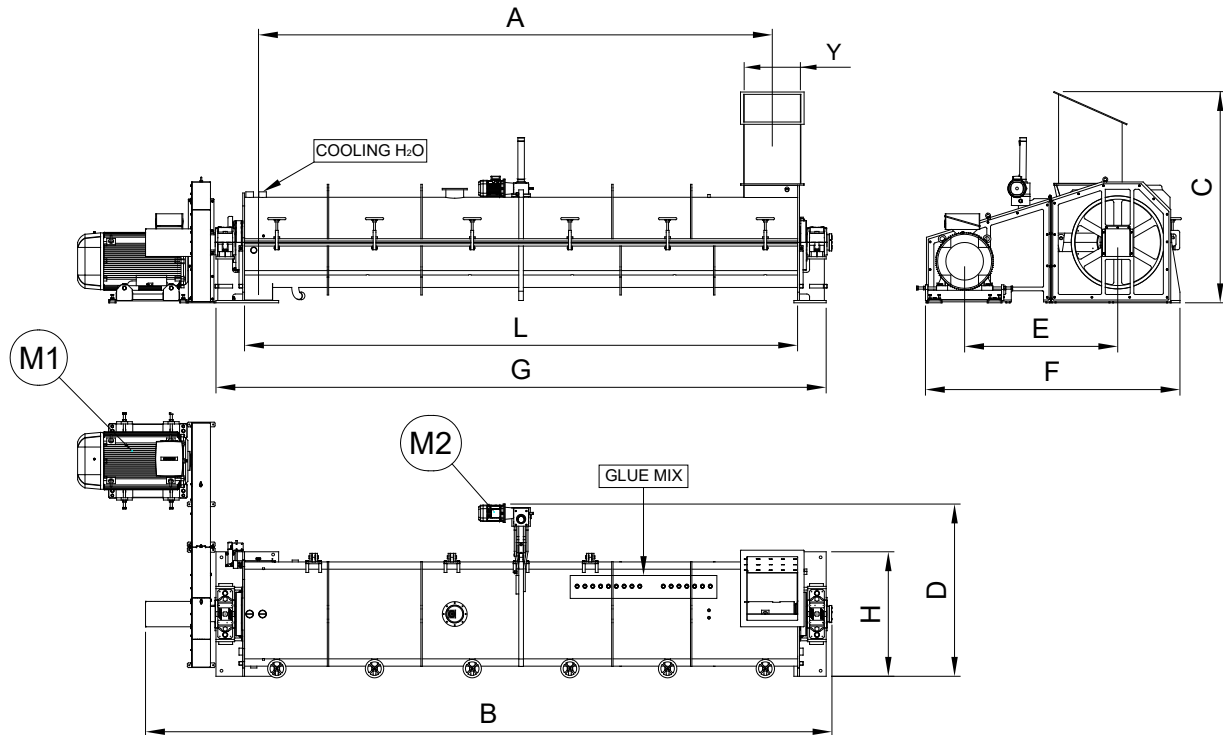
- Reduced fragmentation of wood particles.
- Homogeneous distribution of the glue in the shavings.
- Maximum cleaning during operation.
- Less glue consumption.

Low Speed Glue Blenders



Model "BBL"

DATA SHEET



TYPE	OVERALL DIMENSIONS [mm]									
	A	B	C	D	E	F	G	H	Y	L
BBL-04-SLF BBL-04-CLF	2.175	3.715	1.315	1.220	1.040	1.715	3.065	870	400	2.500
BBL-06-SLS BBL-06-CLF	2.625	4.290	1.645	1.500	1.310	1.850	3.620	1.000	450	3.000
BBL-08-SLF BBL-08-CLF	2.625	4.290	1.645	1.500	1.340	1.850	3.620	1.000	450	3.000
BBL-10-SLF BBL-10-CLF	2.625	4.315	1.720	1.600	1.500	2.110	3.625	1.100	450	3.000
BBL-12-SLF BBL-12-CLF	3.125	4.820	1.720	1.600	1.500	2.110	4.145	1.100	450	3.000
BBL-15-SLF BBL-15-CLF	3.625	5.315	1.870	1.650	1.570	2.300	4.620	1.200	450	4.000
BBL-22-SLF BBL-22-CLF	4.100	5.875	1.965	1.780	1.570	2.430	5.120	1.280	500	4.500
BBL-30-SLF BBL-30-CLF	4.575	6.450	2.195	1.870	1.660	2.650	5.620	1.350	550	5.000
BBL-40-SLF BBL-40-CLF	5.575	7.450	2.260	1.870	1.660	2.760	6.620	1.350	550	6.000
BBL-50-SLF BBL-50-CLF	5.450	7.590	2.610	2.180	1.730	3.160	6.700	1.600	700	6.000
BBL-60-SLF BBL-60-CLF	5.950	8.110	2.630	2.180	1.780	3.330	7.200	1.600	700	6.500

Low Speed Glue Blenders



Model "BBL"

CODE DEFINITION

TYPE			Capacity [t/h b.d.]		Type of fraction [a]			Type of internal sheet [b]			Urea injection system [c]			Equipment compliant with 2014/34/UE ATEX [d]			
B	B	L	3	0	S	L	F	W	T	C	I	N	J	A	T	2	2

[a]: SLF = For SL fraction
CLF = For CL fraction

[b]: SAF = Inox type Avesta SAF 2205 (standard for fresh wood)
WTC = Welded tungsten carbide coating (standard for recy wood)
CCT = Covering with ceramic tiles (maximum wear resistance for recy wood)

[c]: INJ = Urea injection system
= Omit if not present

[d]: AT22 = External area classified ATEX zone 22
= Unclassified external area (Omit)

TYPE	Internal diameter [mm]	Lenght [mm]	Volume [l]	Capacity		Installed power [Kw/poli]		Cooling system Δt 7°C [1] [2]			Approx weight	
				Min. [t/h]	Max [t/h]	Shell open	Main motor	[l/h]	[kcal/h]	[kW]	SLF	CLF
BBL-04-SLF BBL-04-CLF	480	2.500	452	0,6	4,0	0,37/6	45/4	4.230	21.150	25	2.300	2.450
BBL-06-SLF BBL-06-CLF	530	3.000	662	1,0	6,0	0,37/6	75/4	6.100	42.700	50	2.850	3.000
BBL-08-SLF BBL-08-CLF	600	3.000	848	1,5	8,0	0,37/6	75/4	6.950	48.650	60	3.250	3.450
BBL-10-SLF BBL-10-CLF	700	3.000	1.155	2,0	10,0	0,37/6	75/4	8.100	56.700	66	3.550	3.800
BBL-12-SLF BBL-12-CLF	700	3.500	1.350	2,5	12,0	0,37/6	90/4	9.600	67.200	79	3.800	4.050
BBL-15-SLF BBL-15-CLF	800	4.000	2.010	3,0	15,0	0,75/6	90/4	12.260	85.820	100	4.400	4.700
BBL-22-SLF BBL-22-CLF	850	4.500	2.550	4,0	22,0	0,75/6	110/6	16.100	112.700	135	5.650	5.950
BBL-30-SLF BBL-30-CLF	900	5.000	3.180	5,0	30,0	1,1/6	132/6	20.500	142.940	170	6.850	7.150
BBL-40-SLF BBL-40-CLF	900	6.000	3.815	6,0	40,0	1,1/6	160/6	24.420	171.500	200	8.350	8.670
BBL-50-SLF BBL-50-CLF	1.200	6.000	6.785	10,0	50,0	2,1/6	200/6	32.600	228.200	265	10.500	10.850
BBL-60-SLF BBL-60-CLF	1.200	6.500	7.350	15,0	60,0	3,0/8	250/6	35.000	245.000	285	12.500	12.900

[1] Particle temperature 65°C.

[2] Working pressure 2,5 bar.

Example for order: **BBL-30-SLF-WTC-INJ-AT22**