



## BEST TO



### WASTE TREATMENT

- Waste and scrap processing

The roller screens, model "WBS" BULLMECH, are designed for screening various types of product and allow to obtain homogeneous fractions to be sent to the subsequent production processes.

The roller screens "WBS" BULLMECH, find their main application in the cleaning and selection of multiple products, from compost, to plastic, from wood to car fluff, from metal to tires and are able to treat fractions from 1.5 mm up to 250 mm.

Most of the time they are used to recover the under-sieve material coming from the normal roller or drum screens that are not able to obtain fractions smaller than 10 mm.

The particular construction of the screening rollers (patented) allows to operate even with very humid material (humidity >100%) without any clogging or loss of screening quality.

## TECHNICAL CHARACTERISTICS

- Possibility of screening wet fractions with a 1.5 mm mesh;
- Different types of rollers to obtain up to five fractions with a single machine;
- Variation of the machine configuration quickly and easily by inserting special spacers. In this way it is possible to have multiple machines with a single machine;
- Manual or motorized discharge flaps;
- Integrated suction system for the removal of light pollutants such as paper, nylon, textile fibers, etc.; (optional)
- Installation also in environments classified as ATEX zone 22.

# Roller Screens

## Model "WBS"



**Screening rollers for wet material**



**Screening rollers for dry material**

### **BENEFITS**

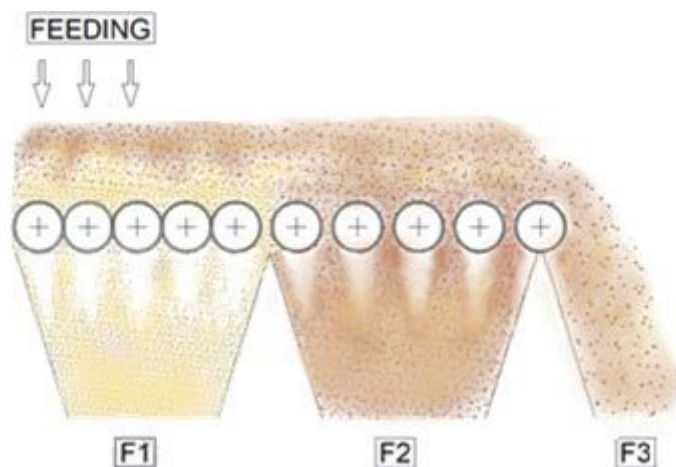
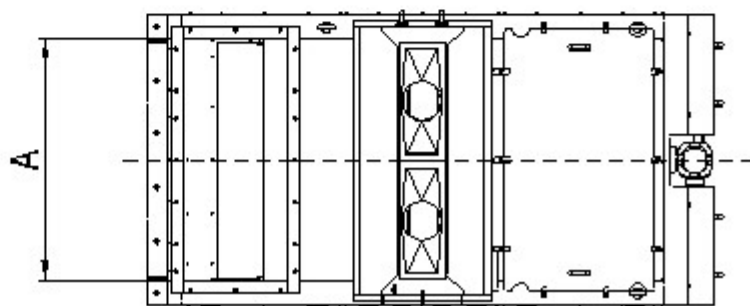
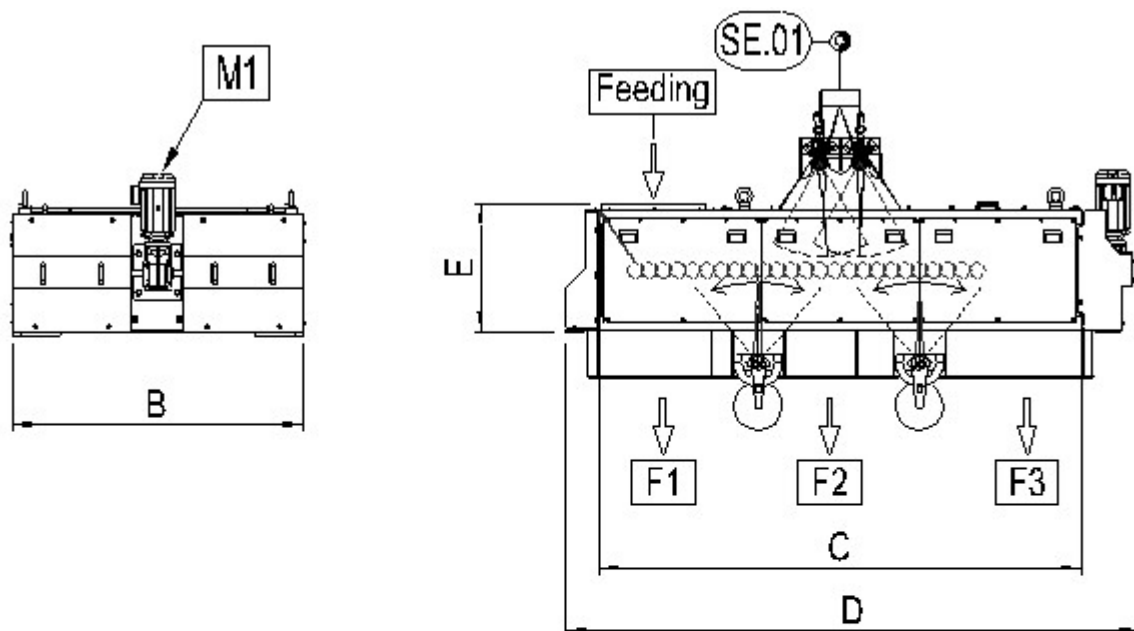
- High capacity in a small space and with low energy consumption;
- Roller bed with Zig Zag effect that guarantees high quality and efficiency of screening;
- Roller profiles that ensure accurate dimensional selection and optimal dragging;
- Long life of the rollers with any type of material;
- Easy adjustment of the granulometries on the fractions that allows constant adaptation of the machine to the material treated;
- Screening system that prevents clogging and/or blockages even with very humid material (humidity >100%);
- Great ease of adjustment of the screening parameters;
- Low maintenance costs and great reliability make it the ideal choice for screening any type of material.

# Roller Screens



## Model "WBS"

### DATA SHEET



# Roller Screens



## Model "WBS"

### DATA SHEET

TYPE	Internal width	External width	Internal length	External length	Height (excluding exhaust skirt)	Suction (optional)	Capacity	Installed power	Approximate weight
	A	B	C	D	E	SE.01		M1	
	[mm]	[mm]	[mm]	[mm]	[mm]	[m <sup>3</sup> /h]		[m <sup>3</sup> /h]	
<b>WBS_2000_1000</b>	1.000	1.350	2.000	2.750	795	9.000	Depending on the type of material and number of rollers.	3,0	Based on the number of rollers and machine configuration.
<b>WBS_3000_1000</b>	1.000	1.350	3.000	3.750	795	9.000		4,0	
<b>WBS_3500_1000</b>	1.000	1.350	3.500	4.250	795	9.000		4,0	
<b>WBS_4000_1000</b>	1.000	1.350	4.000	4.750	795	9.000		5,5	
<b>WBS_4500_1000</b>	1.000	1.350	4.500	5.250	795	9.000		5,5	
<b>WBS_5000_1000</b>	1.000	1.350	5.000	5.750	795	9.000		7,5	
<b>WBS_5500_1000</b>	1.000	1.350	5.500	6.250	795	9.000		7,5	
<b>WBS_2500_1500</b>	1.500	1.800	2.500	3.250	795	12.000		4,0	
<b>WBS_3000_1500</b>	1.500	1.800	3.000	3.250	795	12.000		4,0	
<b>WBS_3500_1500</b>	1.500	1.800	3.500	4.250	795	12.000		5,5	
<b>WBS_4000_1500</b>	1.500	1.800	4.000	4.750	795	12.000		5,5	
<b>WBS_4500_1500</b>	1.500	1.800	4.500	5.250	795	12.000		5,5	
<b>WBS_5000_1500</b>	1.500	1.800	5.000	5.750	795	12.000		5,5	
<b>WBS_5500_1500</b>	1.500	1.800	5.500	6.250	795	12.000		7,5	
<b>WBS_6000_1500</b>	1.500	1.800	6.000	6.750	795	12.000		7,5	
<b>WBS_6500_1500</b>	1.500	1.800	6.500	7.250	795	12.000		7,5	
<b>WBS_7000_1500</b>	1.500	1.800	7.000	7.750	795	12.000		7,5	
<b>WBS_8000_1500</b>	1.500	1.800	8.000	8.850	795	12.000		9,2	
<b>WBS_9000_1500</b>	1.500	1.800	9.000	9.850	795	12.000		9,2	
<b>WBS_9500_1500</b>	1.500	1.800	9.500	10.350	795	12.000		11,0	
<b>WBS_10000_1500</b>	1.500	1.800	10.000	10.850	795	12.000	11,0		

Example for order: **Contact Bullmech for the definition of the Machine**